

# Sam Switch to Hubbard Wind Transmission Line Project

Public Meeting • June 11, 2020



# Welcome

## Agenda

### About Lone Star

» Overview

### Project Overview

» Sam Switch to Hubbard Wind Transmission Line Project

» Roadmap to Route Approval

» Route Map

» Right-Of-Way Easements

» Construction Activities

» Operations and Maintenance

» Anticipated Project Schedule

### Wrap Up

» How to Contact Us

» Q&A Session

# Lone Star Transmission Overview

Connecting Communities across Texas with Reliable Energy

Lone Star Transmission, LLC (Lone Star) is a subsidiary of NextEra Energy Transmission, LLC, a leading competitive transmission company in North America. Founded in 2009, Lone Star currently owns and operates high-voltage transmission assets throughout the State of Texas. Lone Star is known for its innovative technology and cost-effective spun-concrete monopoles that stretch from Scurry County, northwest of Abilene, to Navarro County, just south of Dallas. Lone Star is headquartered in Austin, Texas.

Please visit our website at [LoneStarTransmission.com](http://LoneStarTransmission.com) for more information about us!



# Sam Switch to Hubbard Wind Project

## 345 kV Transmission Line Project

### What Is The Project And Why Is It Needed?

This project is a new 345 kilovolt (kV) transmission line in Hill County to connect a new, 300 megawatt (MW) wind generator the Hubbard Wind Energy Center (Hubbard Wind) to the electric grid.

Hubbard Wind requested to connect to the electric grid via Lone Star's Sam Switch Station.

### How Will Lone Star Connect Hubbard Wind?

Lone Star proposes to:

- 1 Construct a new 15.4-mile 345 kV transmission line to connect Lone Star's Sam Switch Station, located between Hillsboro and Mount Calm, to the new Hubbard Wind Collector Station, located west of Mount Calm.
- 2 Coordinate with Hubbard Wind to acquire the right of way to construct the Project by the end of 2021.
- 3 Modify Lone Star's existing Sam Switch Station.

# Roadmap to Route Approval

## Define Project

Lone Star identified beginning and end points for the project, based upon Hubbard Wind's request to interconnect.

## Route Evaluation

Lone Star engaged routing consultants to evaluate the route using over 40 environmental and land use routing criteria, perform an Environmental Assessment and solicit feedback from approximately 30 government agencies and officials.

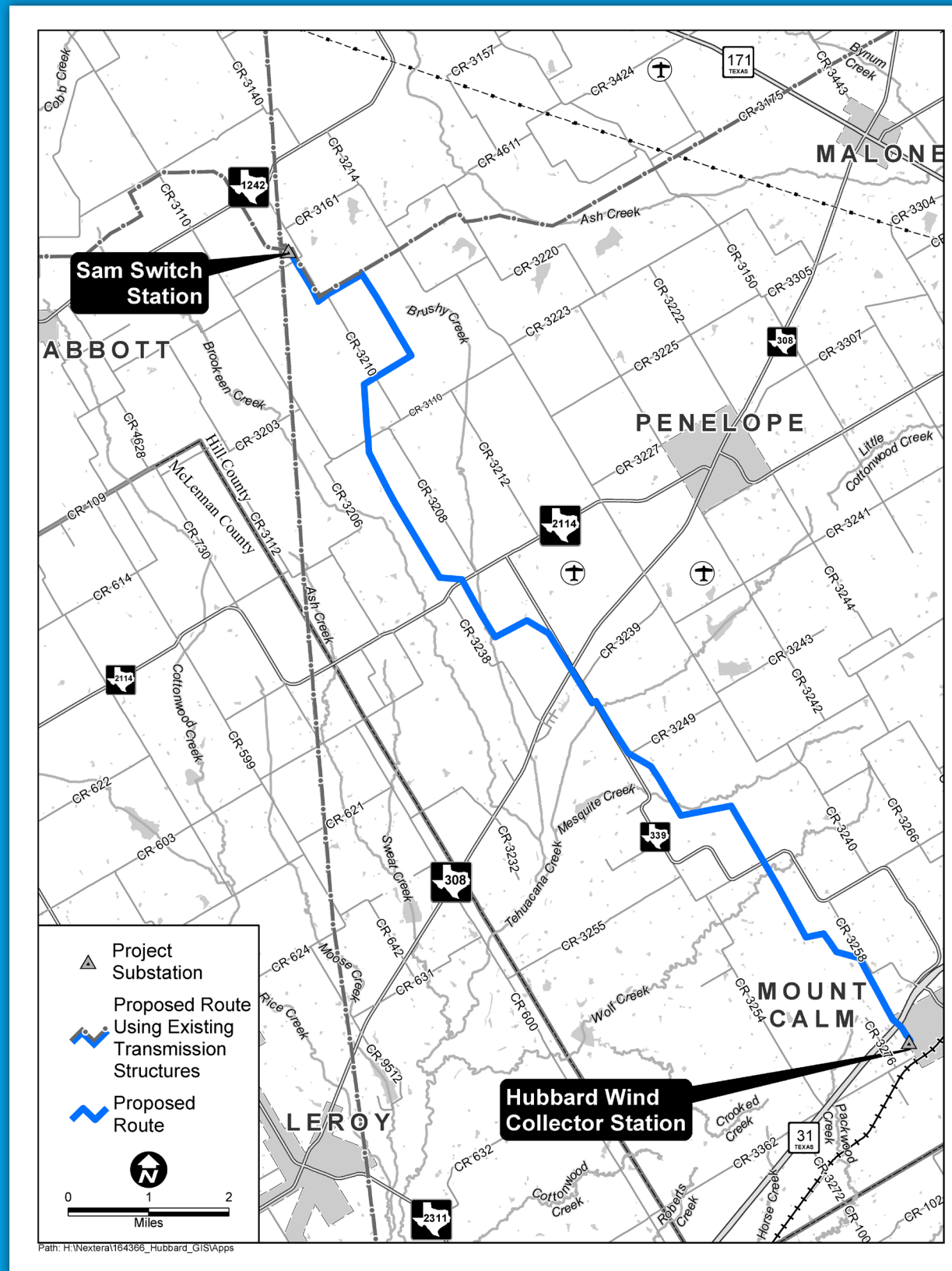
## PUCT Approval

Lone Star will request approval from the Public Utility Commission of Texas (PUCT) to construct, own and operate the proposed transmission line that will be located along the proposed route.

## PUCT Approval

- » Lone Star files application with the PUCT and landowners and other stakeholders
- » PUCT Staff and parties reviews application and ask follow-up questions
- » If a hearing is requested, parties and PUCT Staff may file testimony and participate in the hearing
- » PUCT will complete its review and make a decision to approve or deny the application within 12 months

# Route Map



# Proposed Transmission Structures

The 15.4-mile transmission line route will utilize approximately 100 single-pole transmission structures

## Typical Tangent Information

- » Typical heights from 90 to 120 feet
- » Typical spans from 700 to 1500 feet
- » Right of way is 150 to 200 feet wide
- » Concrete or steel
- » Embedded or on independent foundation
- » Larger angle structures will require additional structural support (guy wires)



# Right-of-Way Easements

## Working with Landowners

Hubbard Wind has secured options for easements from landowners that will be crossed by the proposed transmission line. Following PUCT approval of the project, Hubbard Wind will finalize the purchase of the easements and will transfer the easements to Lone Star.

Crews and contractors may access the rights of way to conduct the following activities while the project approval process is underway.

- » Surveying
- » Cultural and natural resources assessments
- » Wetlands delineations
- » Soils testing

Lone Star will work with landowners on an ongoing basis throughout the construction, clean up phase of the project and beyond.





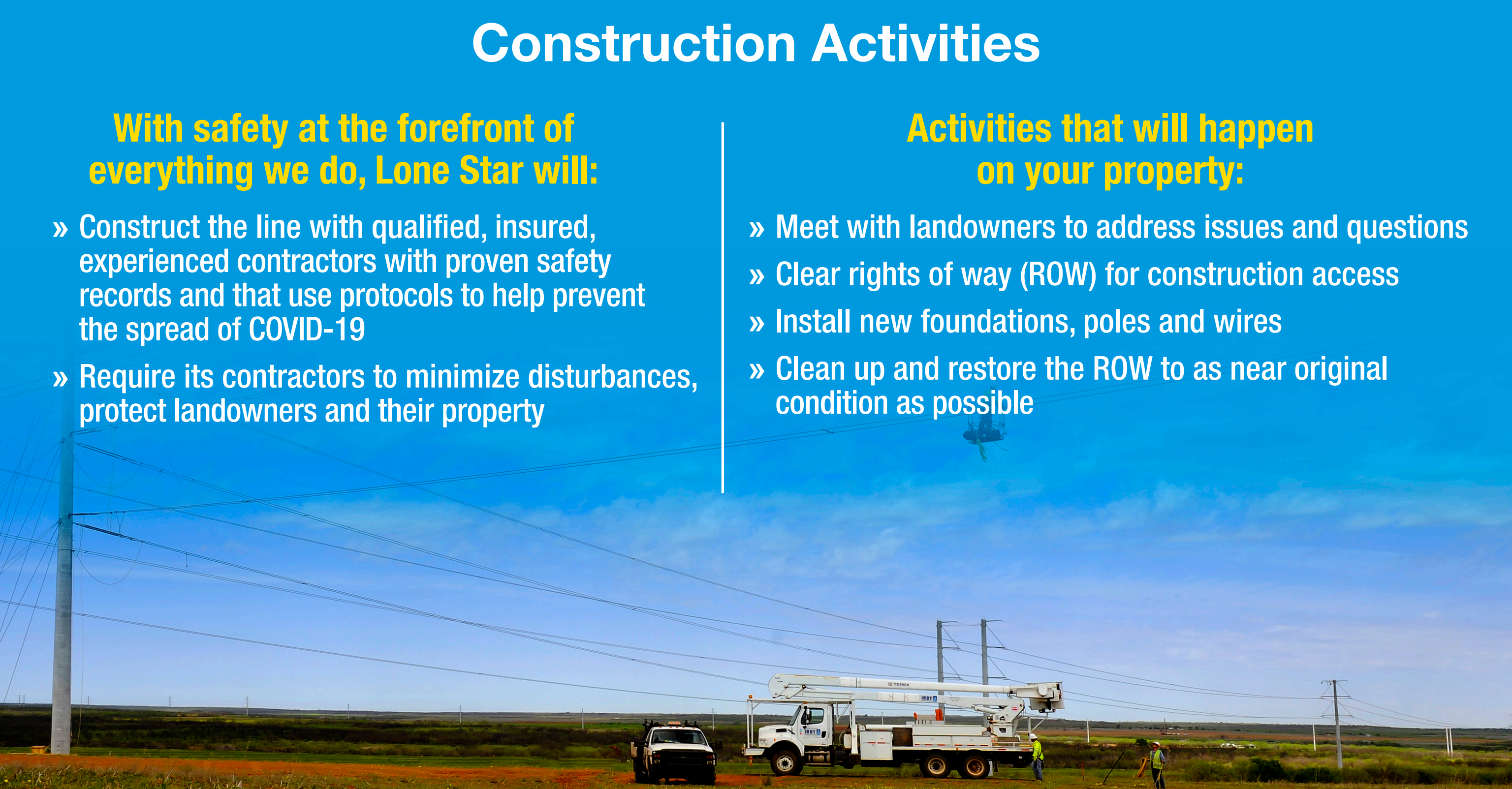
# Construction Activities

## With safety at the forefront of everything we do, Lone Star will:

- » Construct the line with qualified, insured, experienced contractors with proven safety records and that use protocols to help prevent the spread of COVID-19
- » Require its contractors to minimize disturbances, protect landowners and their property

## Activities that will happen on your property:

- » Meet with landowners to address issues and questions
- » Clear rights of way (ROW) for construction access
- » Install new foundations, poles and wires
- » Clean up and restore the ROW to as near original condition as possible



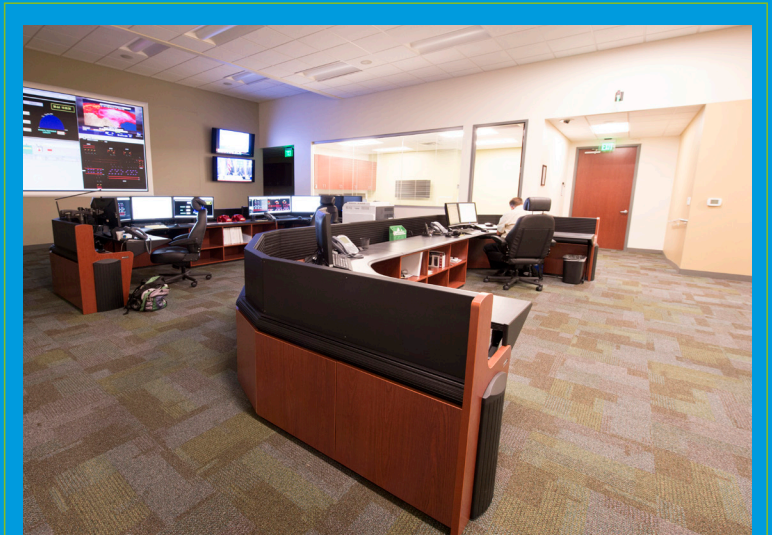
# Operations and Maintenance

Lone Star focuses on reliability and safety standards for operating transmission assets

## To do this, Lone Star:

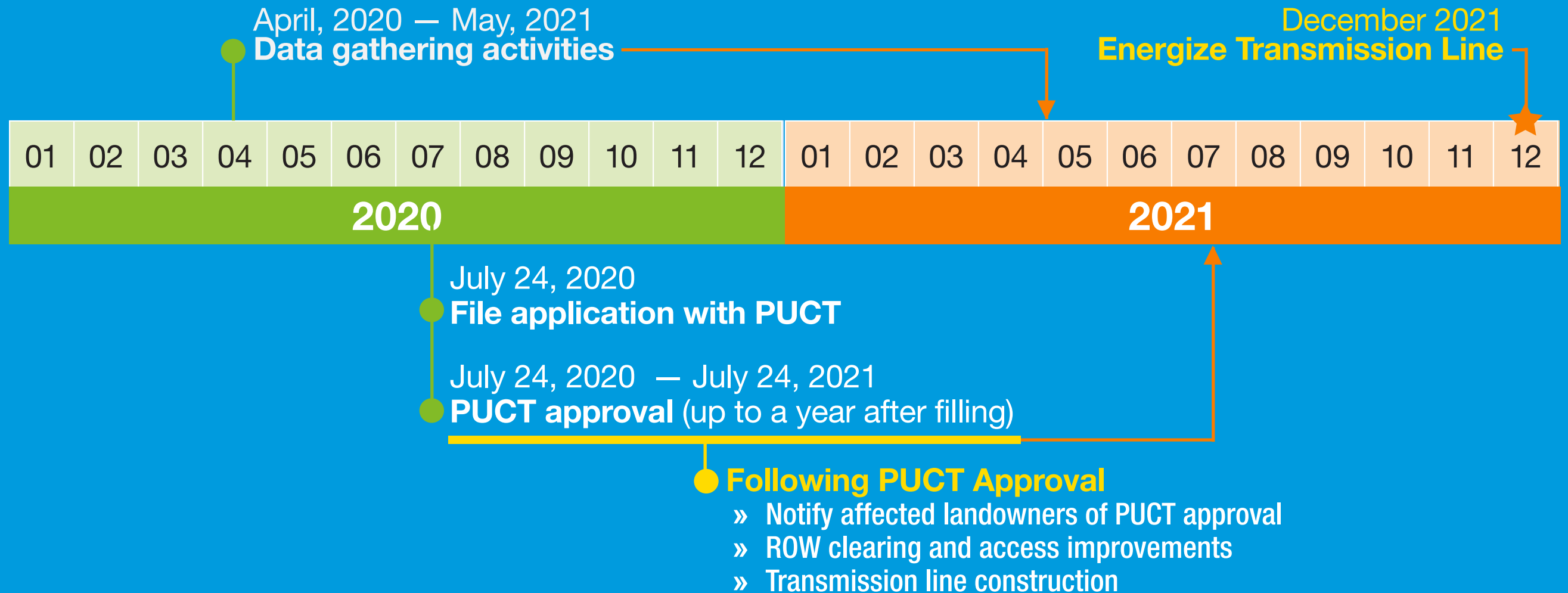
- » Monitors system on a 24-hour basis from its state-of-the-art operations control center
- » Performs regular, preventative, time-based inspections
- » Makes timely repairs when needed
- » Monitors and removes vegetation in ROW to help assure of the safe and reliable operation of the transmission line

Lone Star provides landowners advance notice before accessing the ROW to perform scheduled maintenance. In the unlikely event of an emergency, Lone Star will immediately deploy local crews to ensure safety and resolve any issues.



# Anticipated Project Schedule

Transmission line construction activities will start in the summer of 2021 following PUCT approval, and will take approximately 6 months. The following is a list of events and approximate dates contingent upon PUCT approval date:



# How to Contact Us?

For more information, please contact us at:



Main: 512-236-3130  
Office: 512-236-3151  
Voice or text: 512-810-5561



[Kelly.Wells@lonestar-transmission.com](mailto:Kelly.Wells@lonestar-transmission.com)



[www.lonestartransmission.com\samswitchtohubbardwind](http://www.lonestartransmission.com\samswitchtohubbardwind)

# Questions?

A hand is shown placing a white puzzle piece with the word "QUESTION" written on it into a larger white puzzle piece that has a red textured area with the word "ANSWER" written on it. The background is a solid blue color.

QUESTION

ANSWER

**Thank you for participating in the Sam Switch  
to Hubbard Wind Online Public Meeting!**